

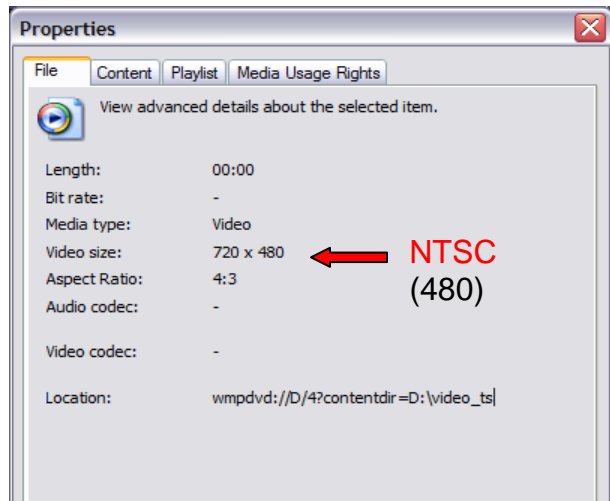
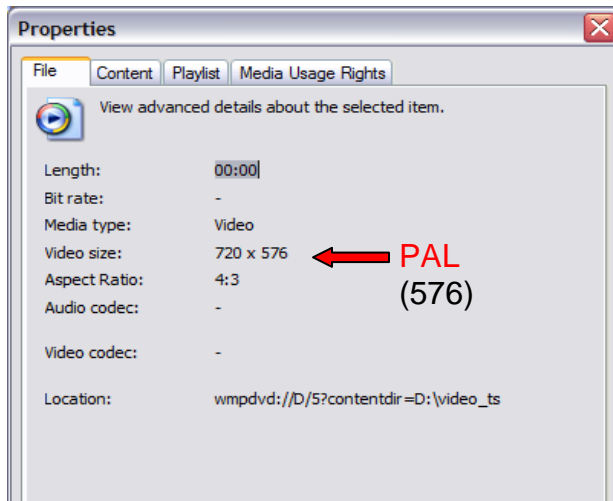
PAL or NTSC?

Most videos we have will be encoded PAL or NTSC. This has to do with the color and frame encoding for picture output to television. While there are several technical differences, the best way to quickly determine if a DVD is in NTSC or PAL format is to check the picture size. PAL has more horizontal lines than NTSC, 576 compared to 480.

You can do this in Windows Media Player by playing the DVD using Windows Media Player, then going to **File > Properties** and looking at the line that says “video size.”


If it is 720 x 576, it's probably PAL

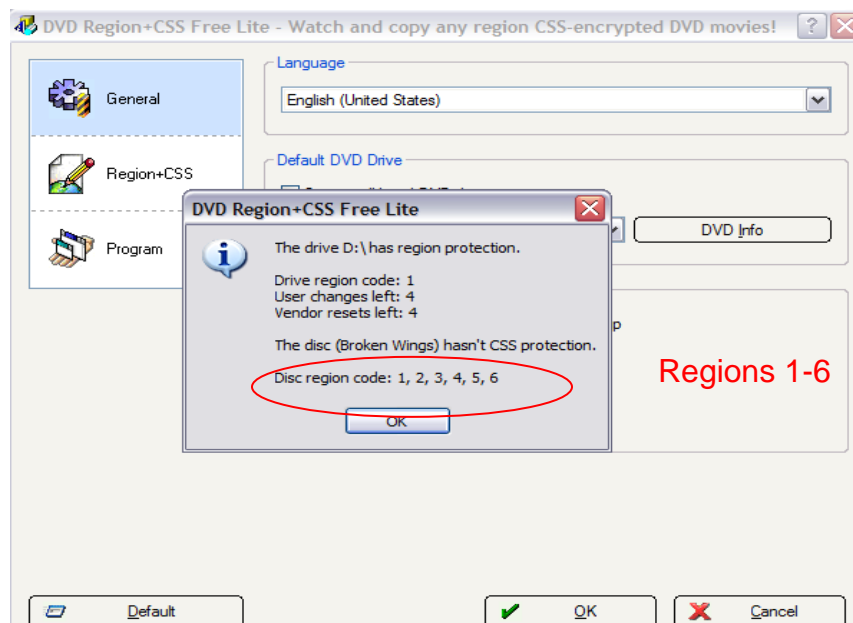
If it is 720 x 480, it's probably NTSC



DVD Regions

DVDs can have a specific regional code or codes, or they can be playable in all 8 regions (region-free). If a DVD won't play on your computer without DVD Region+CSS Free Lite running, or it returns a message that you need to change your DVD drive's region settings, then the DVD is not a region 1 or region free DVD.

You can verify the DVD's region by opening DVD Region+CSS Free Lite (clicking the icon  or find it in your programs list from the start menu) and clicking “**DVD Info**.”



You can check for regional codes by opening Kprobe, then clicking **Info > Disc** and looking at the “Region” field. Note that this will also tell you how to determine if a DVD is a DVD-R, DVD+R, or an ordinary, commercially produced DVD (DVD-ROM).

DiscInfo	
Disc Type	DVD-ROM
Book Type	DVD-ROM
Manufacturer	
Media ID	
Protection System	None
Region	1,2,3,4,5,6,7,8
Capacity	6.60 GB
Layer 0 Capacity	3.95 GB
Free Size	0.00 GB
Free Blocks	0
Number of Layers	2
Track Path	OTP
Maximum Rate	10.08 Mbps
Linear Density	0.293 um/bit
Track Density	0.74 um/track
Maximum Read Speed	8.0x

DiscInfo	
Disc Type	DVD-ROM
Book Type	DVD-ROM
Manufacturer	
Media ID	
Protection System	None
Region	2
Capacity	5.52 GB
Layer 0 Capacity	3.36 GB
Free Size	0.00 GB
Free Blocks	0
Number of Layers	2
Track Path	OTP
Maximum Rate	10.08 Mbps
Linear Density	0.293 um/bit
Track Density	0.74 um/track
Maximum Read Speed	8.0x